



ZODIAC®

FAMILY OF BRANDS | Heritage of Excellence



**PRODUCT
CATALOG**

2017

Jandy®
Pro Series

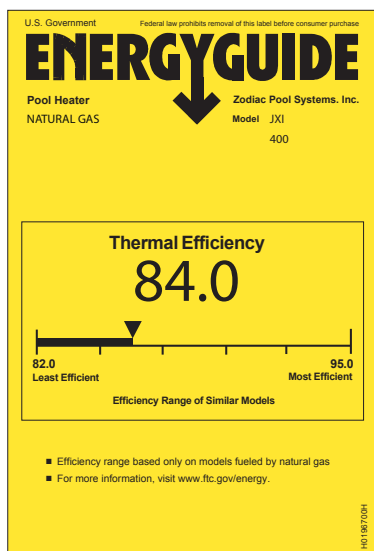
Polaris®

ZODIAC®
a better life®

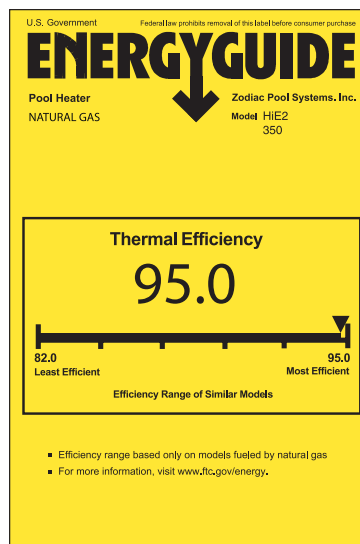
ENERGY GUIDE LABELS

JXi™ 84%

JXi400NK, JXi400N, JXi400P, JXi260N and JXi260P

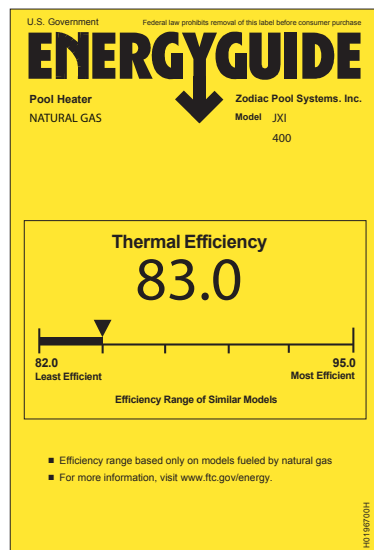


Hi-E2®

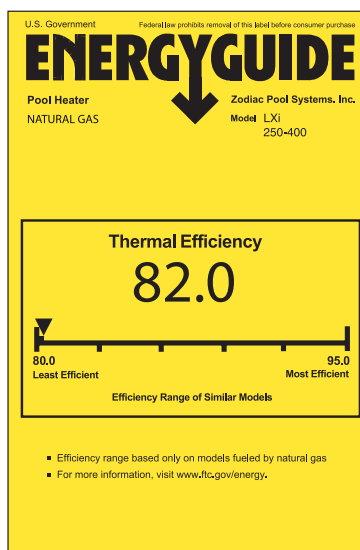


JXi 83%

JXi400NN, JXi400PN, JXi200N and JXi200P



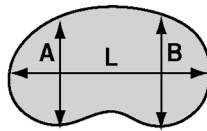
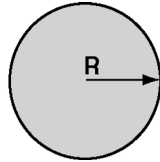
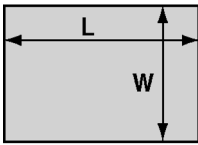
LXi™



HEATER SELECTION GUIDE

POOL SIZING

1. Calculate the pool's surface area in square feet.



$$\text{Area} = L \times W \quad \text{Area} = R \times R \times 3.14 \quad \text{Area} = (A + B) \times L \times .45$$

2. Calculate the design temperature difference.
(Round up to 5 degree increment)

(Typical Water Temp) — (Average Outdoor Temp while using heater)

3. Locate the temperature difference in Pool Heater chart below.
4. Move right to find the surface area that is equal to or slightly greater than the area calculated in step 1.
5. Move up to find the recommended heater size based on pool size and temperature difference.

SPA SIZING

1. Calculate the spa capacity in U.S. Gallons (surface area) x (average depth) x 7.5
2. Locate the spa size in the spa heater chart below that is equal to or slightly greater than the capacity calculated in step one.
3. Move right to find the desired time required to raise the spa water 30°F.
4. Move up to find the required heater size for the chosen time.

Notes: This chart can be adjusted for other temperature rises. For example if you desire a 15°F increase in temperature, simply divide the times in the chart below by 2.

Heat losses to air and/or heat absorbed by spa walls or other objects will affect and add to the heat up times listed in this chart.

Spa sizing times in chart below are based on insulated and covered spa. Always cover your spa when not in use to minimize heat loss and evaporation.

HEATER SIZING CHART

POOL HEATER

Model	125		175		250		325		400	
Temp Diff*	Maximum Area Heater (width x length)									
	0 Wind	3 ½ MPH	0 Wind	3 ½ MPH	0 Wind	3 ½ MPH	0 Wind	3 ½ MPH	0 Wind	3 ½ MPH
15°F	875	675	1250	925	1775	1325	2300	1725	2850	2125
20°F	675	500	925	700	1325	1000	1725	1300	2125	1600
25°F	525	400	750	550	1075	800	1400	1050	1700	1300
30°F	450	325	625	475	900	700	1250	875	1425	1075
35°F	400	300	550	400	775	575	1000	750	1225	900

SPA HEATER

Model	125	175	250	325	400
Spa Size	Time Required to Raise Temp 30°				
200 Gallons	30 Minutes	25 Minutes	20 Minutes	15 Minutes	10 Minutes
400 Gallons	60 Minutes	45 Minutes	30 Minutes	25 Minutes	20 Minutes
600 Gallons	90 Minutes	65 Minutes	45 Minutes	35 Minutes	30 Minutes
800 Gallons	120 Minutes	90 Minutes	60 Minutes	50 Minutes	40 Minutes
1000 Gallons	150 Minutes	110 Minutes	75 Minutes	60 Minutes	50 Minutes

Natural gas pipe size requirements on next page ▶

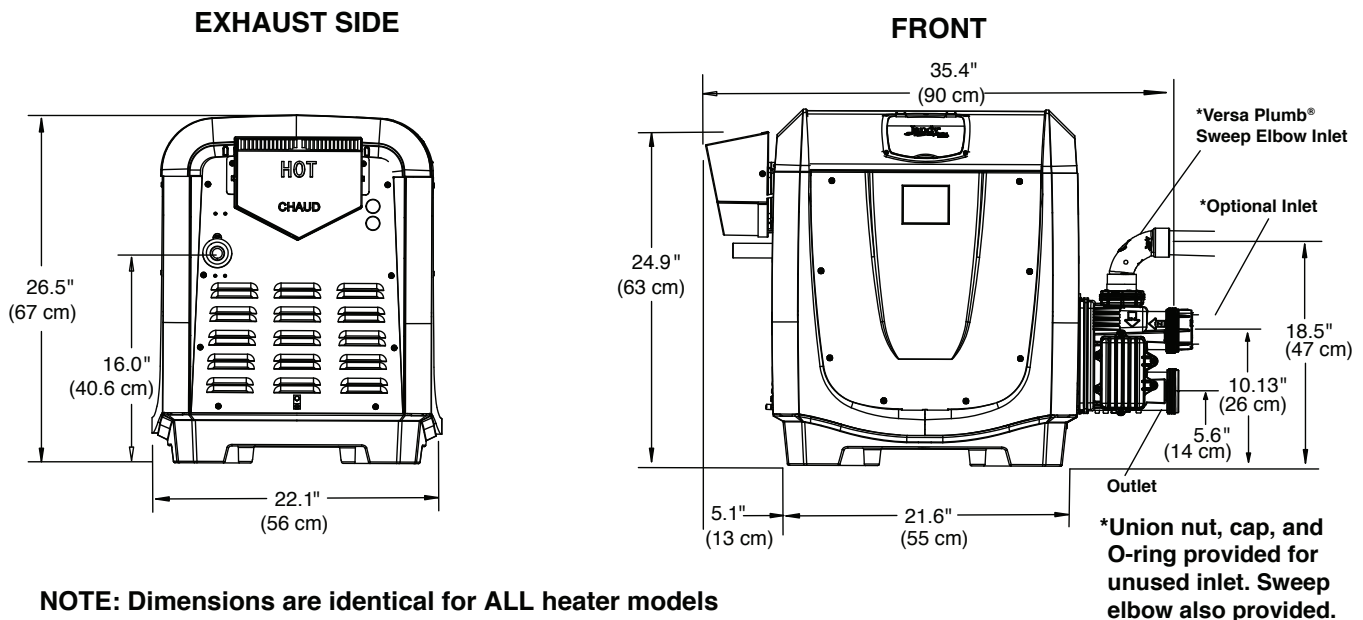
Natural Gas Pipe Size Requirements

Maximum Equivalent Pipe Length										
Natural Gas at 1035 btu per cubic foot										
Propane Gas at 2516 btu per cubic foot										
	3/4"		1"		1-1/4"		1-1/2"		2"	
Model	NG	LP	NG	LP	NG	LP	NG	LP	NG	LP
JXi400	5 ft	20 ft	30 ft	60 ft	110 ft	260 ft	230 ft	560 ft	600 ft	600 ft
JXi260	15 ft	40 ft	60 ft	150 ft	230 ft	590 ft	490 ft	600 ft	600 ft	
JXi200	30 ft	70 ft	100 ft	240 ft	380 ft	600 ft	600 ft			

Notes:

- Numbers are for natural gas (0.65 Sp. Gr.) based on 1/2 inch (3.45 kPa) water column pressure drop. Check supply pressure with a manometer, and local code requirements for variations.
- Check supply pressure and local code requirements before proceeding with installation.
- Consider pipe fittings when determining gas pipe sizing. For every elbow used add three (3) feet to straight pipe length.
- Table shows the minimum supply gas pipe size required. Larger pipe size can be used if required by local code or if desired.
- It is critical that the incoming gas supply pressure at the heater is within the maximum and minimum pressure requirements. If the range of acceptable supply pressure is not provided, the gas supply system to the heater must be modified to meet pressure requirements.

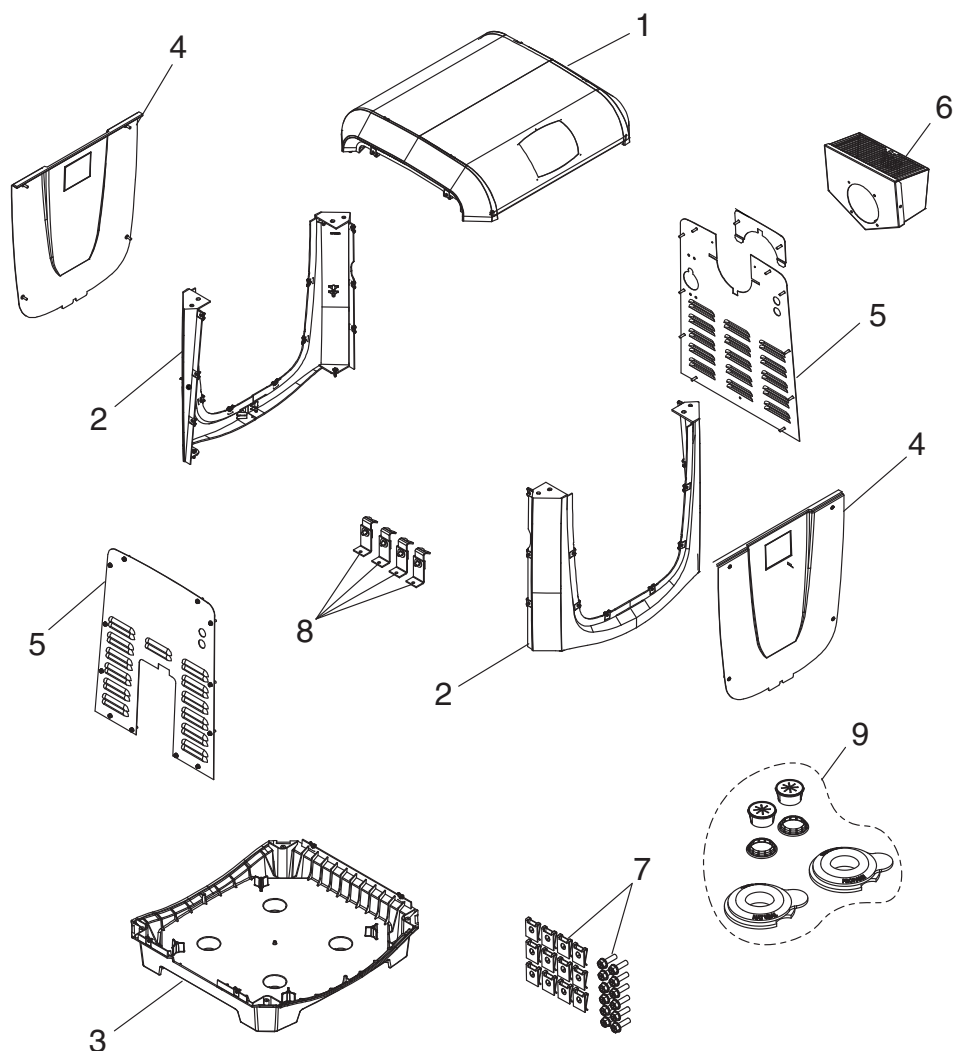
Specifications and Dimensions for JXi Series Heaters



NOTE: Dimensions are identical for ALL heater models

Specifications and Dimensions, JXi Series Heaters						
Model	Vent Diameter (Category I)		Vent Diameter (Category III)		Firing Rate	
	in.	cm	in.	cm	BTU/HR	kcal
200	6	15	4	10	200,000	50
260	7	18	4	10	260,000	66
400	8	20	4	10	399,000	101

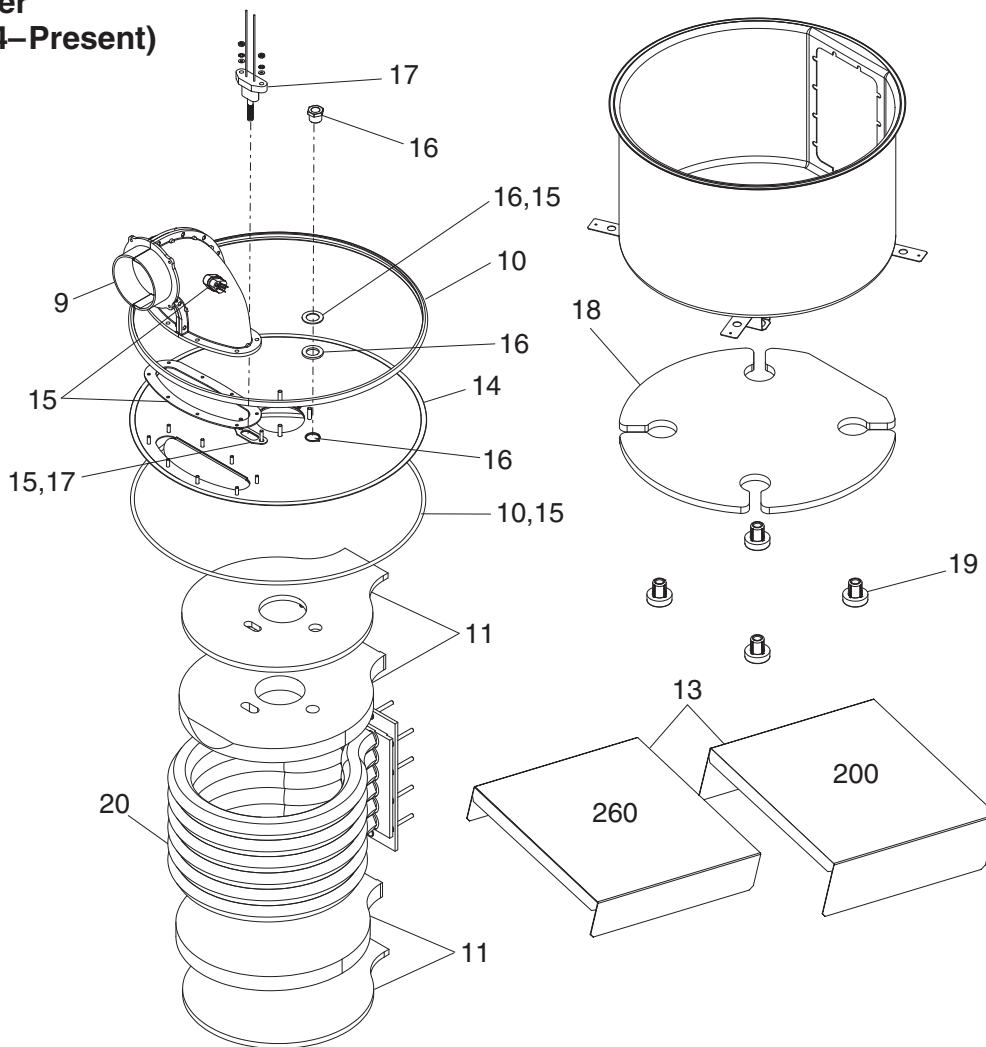
JXi™ Heater (Mfg. 2014–Present)



Key No.	Part No.	Description	Model No.	
1	R0592400	Heater Jacket Top (No User Interface)	200, 260, 400	
2	R0592500	Corner Posts, Heater Jacket, 4/PK	200, 260, 400	
3	R0592600	Heater Base Replacement Kit	200, 260, 400	
4	R0592700	Front/Back Panel, Heater Jacket	200, 260, 400	
5	R0592900	Side Panel Kit, 2/PK	200, 260, 400	
6	R0593100	Vent Terminal Housing Kit	200, 260, 400	
N/S	R0593200	Brackets and Isolator kit	200, 260, 400	
7	R0593300	Jacket Hardware Kit (Nuts, Screws & Clips)	200, 260, 400	
8	R0593400	Anchor Brackets	200, 260, 400	
9	R0591800	Gas Inlet and Electric Hole Plug Kit	200, 260, 400	

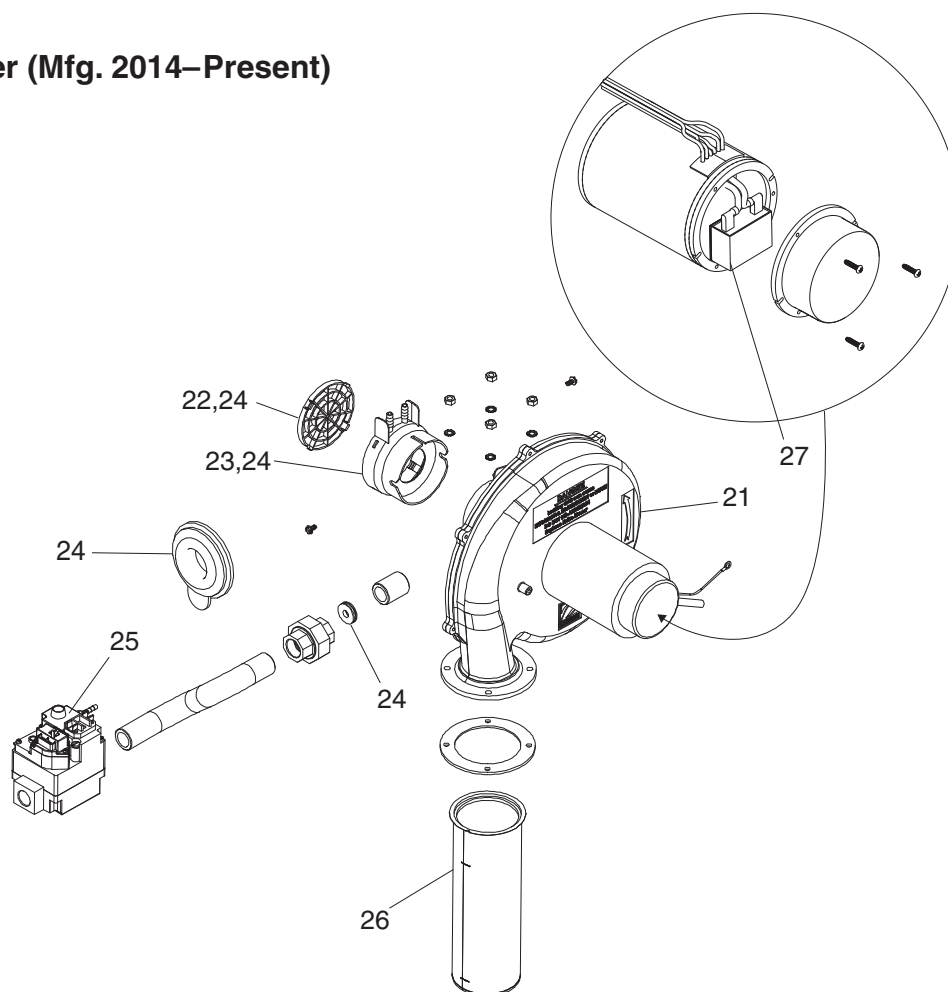
N/S-Not shown

JXi™ Heater (Mfg. 2014–Present)



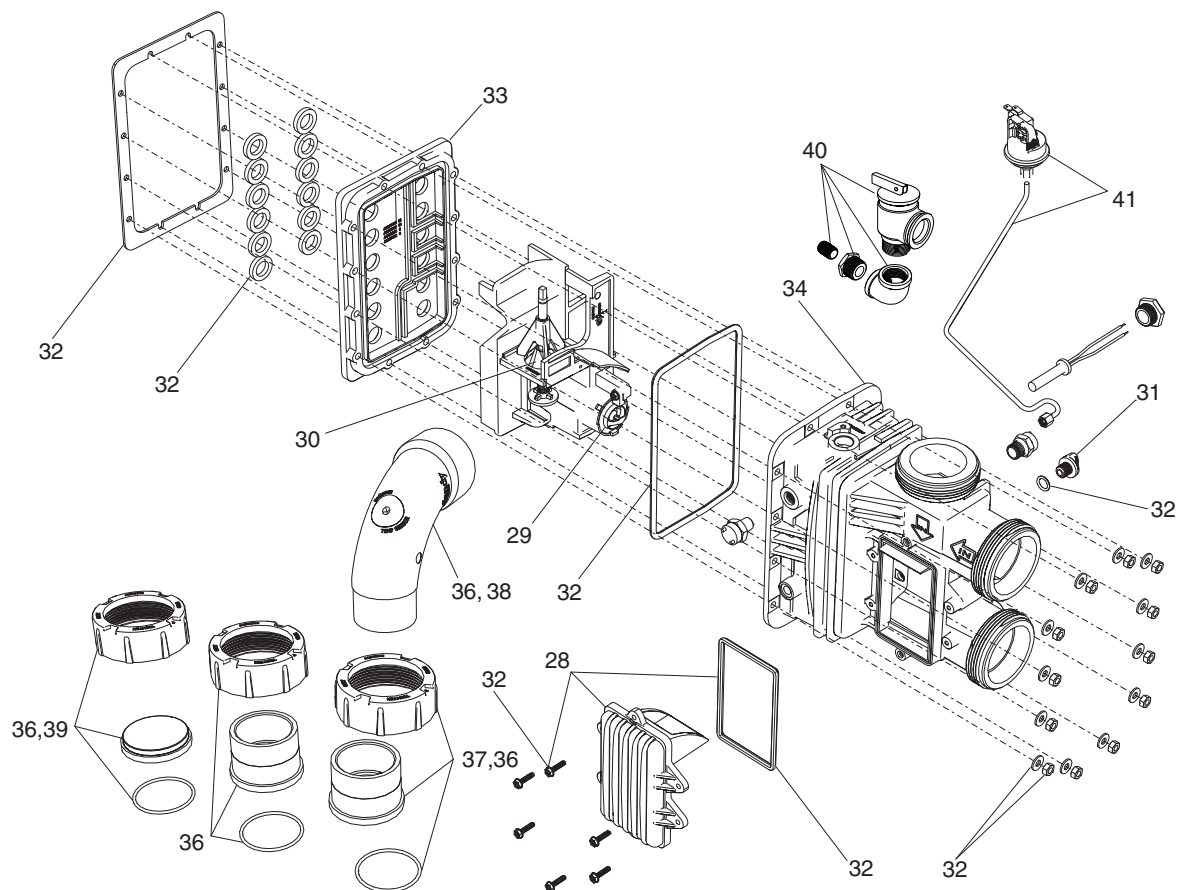
Key No.	Part No.	Description	Model No.	
9	R0590200	Exhaust Elbow Assembly	200, 260, 400	
10	R0590400	Band Clamp Replacement Kit	200, 260, 400	
11	R0590500	Refractory Replacement Kit, Internal	200, 260, 400	
13	R0590700	Combustion Chamber Shelf Kit	200, 260	
14	R0590800	Combustion Chamber Lid (Gaskets and O-rings)	200, 260, 400	
15	R0590900	Gasket Kit	200, 260, 400	
16	R0305400	Sight Glass Kit	200, 260, 400	
17	R0457502	Ignitor Kit	200, 260, 400	
18	R0591000	Refractory Replacement Kit, External	200, 260, 400	
19	R0593200	Isolator Kit	200, 260, 400	
20	R0589405	Heat Exchanger Tube Replacement (400k)	400	
20	R0589403	Heat Exchanger Tube Replacement (260k)	260	
20	R0589402	Heat Exchanger Tube Replacement (200k)	200	

JXi™ Heater (Mfg. 2014–Present)



Key No.	Part No.	Description	Model No.	
21	R0591100	Blower Assembly	200, 260, 400	
22	R0591200	Air Intake Grate	200, 260, 400	
23	R0591302	Orifice, Blower Air Intake Lit, 200N	200	
23	R0591303	Orifice, Blower Air Intake Lit, 260N	260	
23	R0591305	Orifice, Blower Air Intake Lit, 400N	400	
23	R0591312	Orifice, Blower Air Intake Lit, 200P	200	
23	R0591313	Orifice, Blower Air Intake Lit, 260P	260	
23	R0591315	Orifice, Blower Air Intake Lit, 400P	400	
24	R0591601	Gas Orifice Kit, 200, NAT	200	
24	R0591602	Gas Orifice Kit, 260, NAT	260	
24	R0591604	Gas Orifice Kit, 400, NAT	400	
24	R0591605	Gas Orifice Kit, 200, LP	200	
24	R0591606	Gas Orifice Kit, 260, LP	260	
24	R0591608	Gas Orifice Kit, 400, LP	400	
25	R0591400	Gas Valve	200, 260, 400	
26	R0591702	Burner Gas Supply System Kit, 200	200	
26	R0591703	Burner Gas Supply System Kit, 260	260	
26	R0591705	Burner Gas Supply System Kit, 400	400	
27	R0614500	Capacitor Blower, JXi Kit	200, 260, 400	

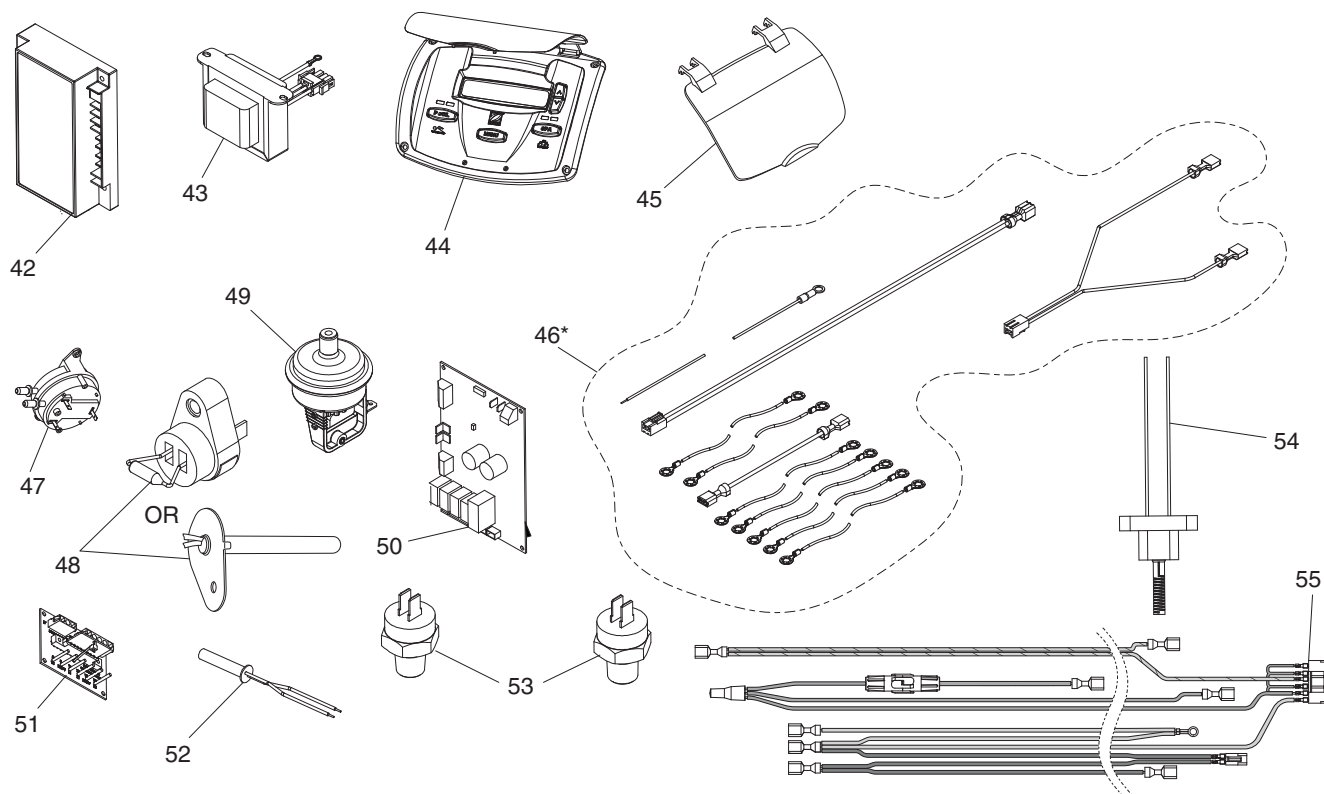
JXi™ Heater (Mfg. 2014–Present)



Key No.	Part No.	Description	Model No.	
28	R0589600	Access Door Kit (Door, O-ring Seal, Screws)	200, 260, 400	
29	R0589700	Thermal Regulator Valve	200, 260, 400	
30	R0589800	Bypass Kit (Shaft, Spring, C-clip, Poppet)	200, 260, 400	
31	R0446000	Drain Plug	200, 260, 400	
32	R0589500	Gasket & Seals Kit (Heater Manifold)	200, 260, 400	
33	R0590005	Manifold Backplate, JXi 400	400	
33	R0590003	Manifold Backplate, JXi 260	260	
33	R0590002	Manifold Backplate, JXi 200	200	
34	R0590100	Manifold, Heater 3 Port (No Backplate)	200, 260, 400	
36	R0593500	Goody Bag Kit†	200, 260, 400	
37	R0522900	Universal Half Unions, 1/PK	200, 260, 400	
38	SEAQL1001	Sweep Elbow Aqualink® Temp	200, 260, 400	
39	R0523000	Drain Cap Assembly	200, 260, 400	
40	R0336101	Pressure Relief Valve JXi Replacement Kit	200, 260, 400	
41	R0457001	Pressure Switch w/Siphon Loop Kit	200, 260, 400	

† Goody Bag Kit also includes the Installation and Operation Manual and the Universal Controller Quick Guide

JXi™ Heater (Mfg. 2014–Present)



Key No.	Part No.	Description	Model No.	
42	R0456900	Ignition Control	200, 260, 400	
43	R0456301	Transformer	200, 260, 400	
44	R0591900	User Interface Kit	200, 260, 400	
45	R0592000	User Interface Lid Kit	200, 260, 400	
46	R0592100	Wiring Harness Kit	200, 260, 400	
47	R0456400	Air Pressure Switch	200, 260, 400	
48	R0524300	Vent Limit Switch - JXi Rev G* and Earlier	200, 260, 400	
48	R0719400	Electronic Flue Sensor - JXi Rev H* and Later**	200, 260, 400	
49	R0013200	Water Pressure Switch Only Kit	200, 260, 400	
50	R0458200	Power Interface Board (PIB) - JXi Rev G* and Earlier	200, 260, 400	
50	R0719500	Power Interface Board (PIB) - JXi Rev H* and Later**	200, 260, 400	
51	R0458100	Power Distribution Board (PDB)	200, 260, 400	
52	R0456500	Temperature Sensor Kit	200, 260, 400	
53	R0592300	High Limit Temp Sensors	200, 260, 400	
54	R0457502	Igniter Kit, JXi	200, 260, 400	
55	R0457700	Power Interface Harness	200, 260, 400	

* The JXi Revision can be identified by the first letter of the serial number found on the heater rating plate.

** To install on Rev G and Earlier JXi heaters, R0719400 and R0719500 Must Be Replaced together.